

SHANE SISSONS



Designer

Physical & Digital Creator

About Me

I have always been someone who enjoys making things. As a kid, I was drawing maps and imaginary magazines. As a teenager, I built my own PC on a wall just to see if I could. Creativity has always helped me make sense of the world, and design naturally became the way I combine that with problem-solving.

Over the years, I have taken on all sorts of projects. I have designed furniture, created personalised gifts, and built things that did not exist yet. It is not about chasing perfection. I am just curious by nature. If something does not work quite right, I like figuring out how to make it better.

That curiosity has led me into product design, graphic design, and digital fabrication. I did not set out to do all of them, but I have always enjoyed learning new skills and putting them to use in practical, thoughtful ways.

Most of my work starts the same way. I see a need, and try to meet it. When I could not find one strong enough, I built a bed. I designed a Santa letter for my son when the ones in the shops did not feel special enough. Consequently, I started making personalised gifts because I wanted people to have something meaningful to give.

What matters to me is creating things that are useful, well-made, and considered. Whether it is a piece of branding, a set of documents, or something physical like a prototype, I care about how it works and how it feels to the person using it.

That is what keeps me designing.

This Portfolio

My portfolio was put together in InDesign. I started by colour matching the teals to the portrait on the front cover, then added a few orange accents to bring in some contrast and give it a bit more depth without making it too busy.

Then I used a mix of filled and outlined shapes and lines to pull everything together and make it feel complete. Rounded rectangles are used across different pages to help with flow and give the layout a bit of direction. On some pages, the shapes show the where to go, kind of leading you through.

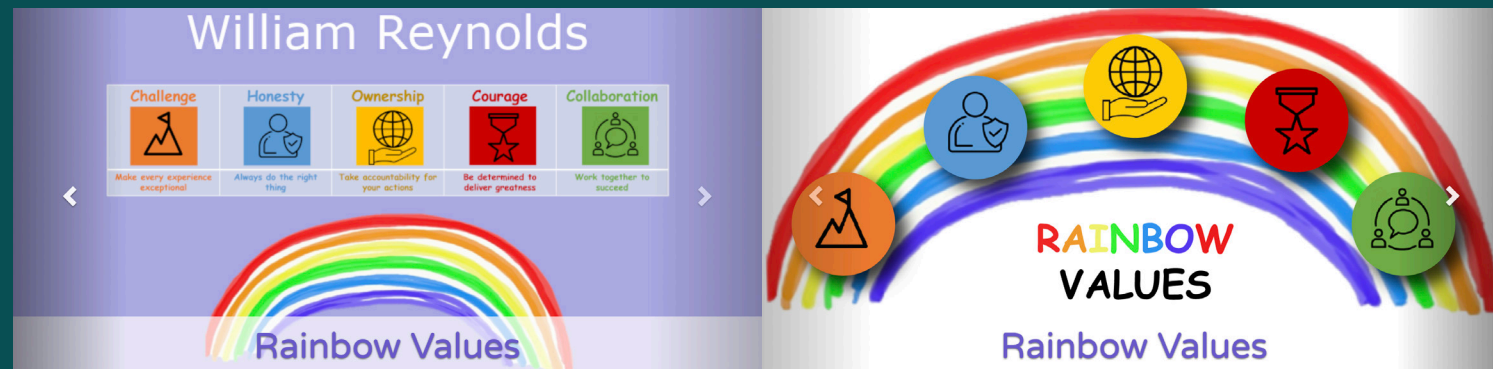
Page numbers are there partly to fill some of the space but also to help people easily refer to specific parts when talking about the work.

InDesign | Print & Digital Design | Brand Application



William Reynolds

Website Banner Before & After



I joined William Reynolds Primary School earlier this year as a parent governor, and one of the first things that stood out was the need for a branding refresh especially around the "Rainbow Values," which are a core part of the school's identity.

The content and meaning behind the Rainbow Values were already great, but the way they were presented needed some attention. The quality and layout were the main areas I wanted to improve.

Firstly, I started redrawing the Rainbow Values as vector graphics so they could be scaled without losing quality. Then worked on the original rainbow image, enhancing it as much as possible to improve clarity and sharpness.

Inspired by the original rainbow, I found a set of crayon-style shapes that matched the look and feel I was going for. I colour matched these to the Rainbow Values and adjusted the opacity so the background stayed subtle and didn't overpower the text. This also let me use bold, coloured words within each section without things becoming visually overwhelming.

To finish, I added drop shadows for depth and replaced the bullet points with clean dividing lines to give the layout a more structured and polished feel.

Rainbow Values



Challenge
Push ourselves and have confidence

Work hard
Don't give up
Be a creative and independent thinker

Honesty
Always do the right thing

Act honestly
Do what is right over what is easy
Treat everyone with respect
Respect our differences

Ownership
Take responsibility for your actions

Go the extra mile
Take responsibility in all areas of school
Care about the wellbeing of yourself and others
Be positive

Courage
Be determined to deliver greatness

Be brave
Be determined
Try hard everyday
Have confidence

Collaboration
Work together to succeed

Work together
Listen to others
Respect the opinions of others
Participate in all activities
Be proud of our diverse British society

Rainbow Badge

Throughout the year, all the children work towards their values certificates to earn their rainbow badge

calendars

For many years I had been ordering personalised wall calendars from well known sites as Christmas gifts. But in 2019, when I went to place my usual order, the rising prices made me pause.

I started looking at the cost of producing them myself and realised it would actually be more cost effective to invest in the supplies and equipment to make them at home especially since I needed around eight each year.

I began with a basic machine and used plastic binders for the first batch. By the second year,

I had upgraded to metal 3:1 pitch binders and better machinery. They have since become the one gift everyone asks for each Christmas.

Over the years, I have refined the designs and streamlined the production process to make them even better.

Following the success of the wall calendars, I decided to expand into desk calendars.

The biggest challenge was creating a design that was quick and simple to produce, without needing glue or complicated assembly.

After a bit of trial and error, I landed on a clean, efficient solution: a tri-fold A4 card that folds into a self supporting stand.

It's a minimal design that looks polished while being practical to produce in batches.

This method kept the process cost effective and efficient, while still delivering a high-quality product that felt like a natural extension of the original wall calendar range.



25	26	27	28	29	30	31
1	2	3	4	5	6	7
8	9	10	11	12	13	14
15	16	17	18	19	20	21
22	23	24	25	26	27	28
29	30	31	1	2	3	4



27	28	29	30	31	1	2
3	4	5	6	7	8	9
10	11	12	13	14	15	16
17	18	19	20	21	22	23
24	25	26	27	28	29	30
1	2	3	4	5	6	7

Christmas Magic

This project began as a personal mission to create a magical, high quality Santa letter for my son after being let down by what was available. I designed every detail with care, from selecting premium paper and creating fold lines that preserved the layout, to using efficient, thoughtful packaging. What started as a one-off became a seasonal product that brought together print, product design, packaging, and customer care in a way that felt meaningful, magical, and built to last.



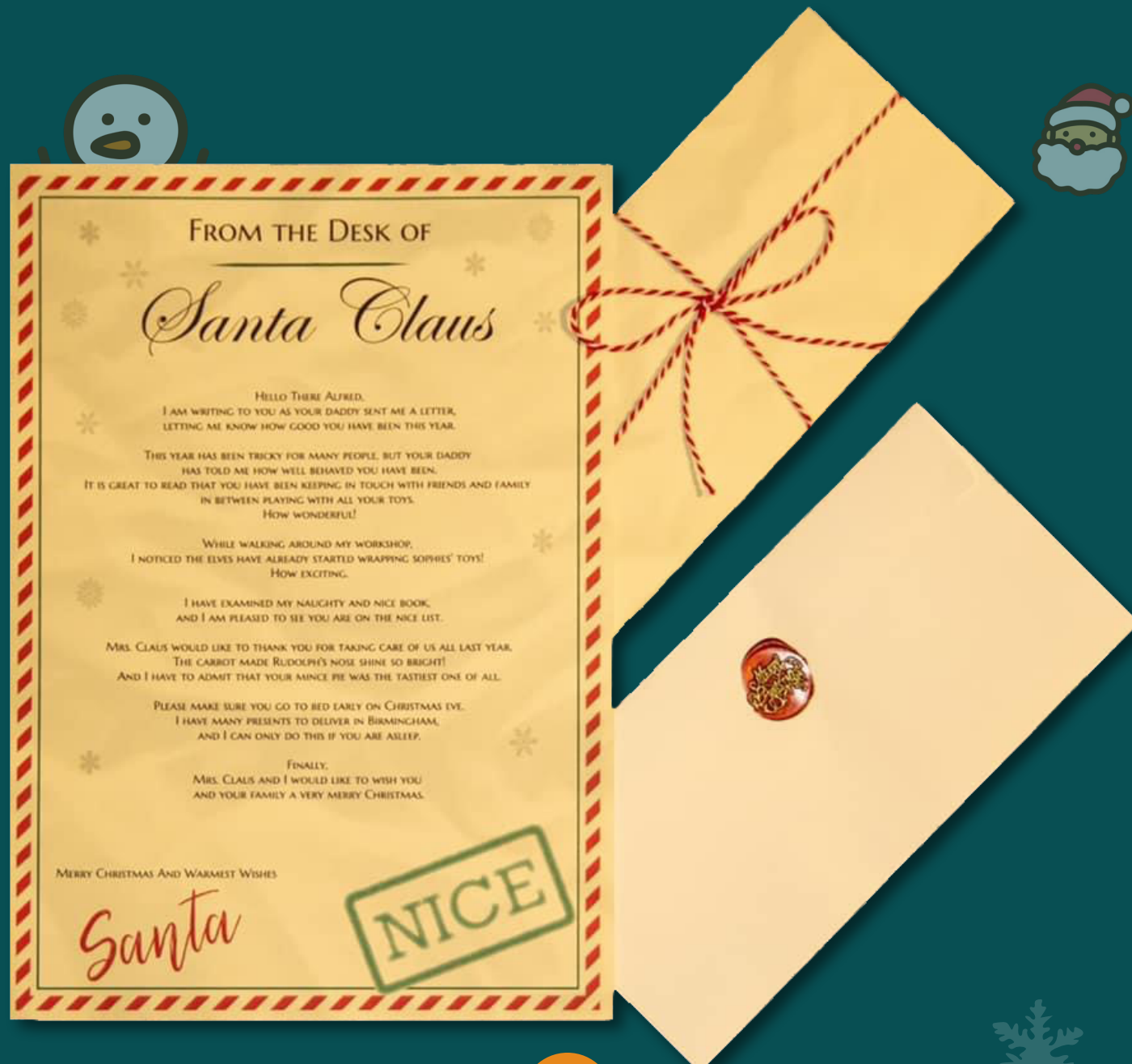
These two designs were part of a festive Christmas product line. Santa's Magical Key was crafted from brown cardstock, finished with a charming candy cane twine to attach the key - creating a warm, nostalgic feel that fits perfectly with the season.

The Reindeer Food was especially interesting from a design and research perspective. The challenge was to create something safe, child-friendly, and fully biodegradable. After exploring various options, I settled on a natural seed mix, adding a touch of gold foil to bring that magical sparkle - all while keeping the product environmentally responsible.

Idea To Product Workflow

Adobe Illustrator

Production



7

8

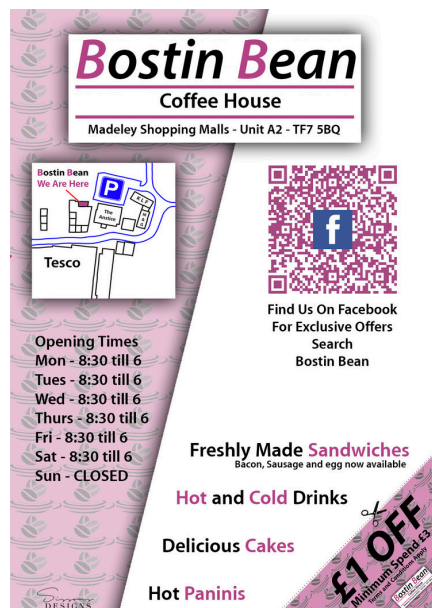
Additional Designs



Flash cards



Social Media



Leaflets



Invitations

Product Design

Childrens Chairs

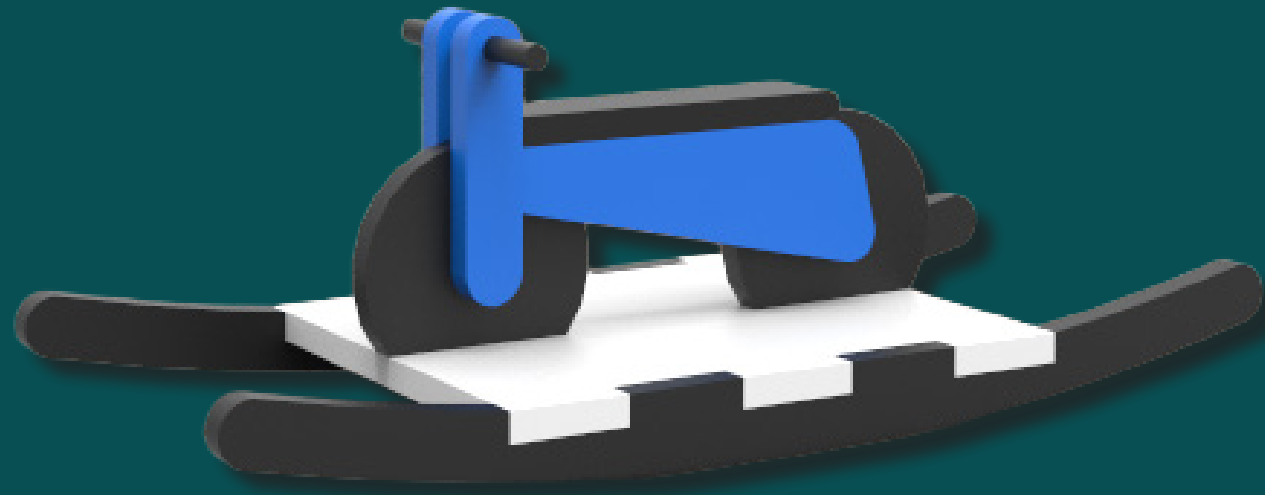


This chair was created with simplicity and modularity in mind. Its interchangeable parts allow the design to be easily adapted to suit different user needs. The open gaps at the back and armrests make cleaning straightforward, preventing the build-up of dirt and ensuring a hygienic, user-friendly design.



Rocking Motorbike

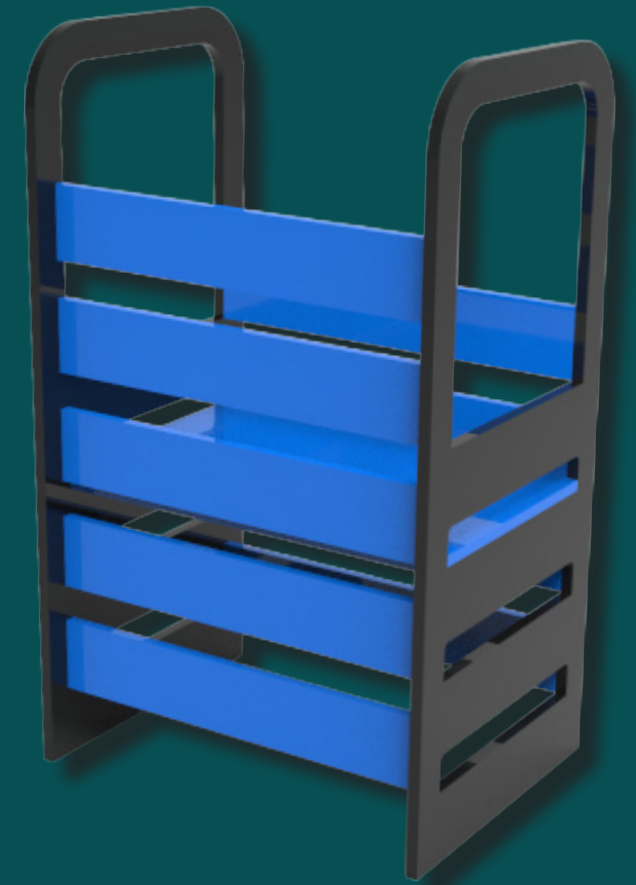
The rocking motorbike is one of my favorite creations. It was designed using sheet materials to simplify the manufacturing process, making it easy to produce with standard tools. This project also marked one of my first experiences with 3D rendering, combining practical design with early digital visualisation skills.



11

Learning Tower

The learning tower went through several design iterations before arriving at the final version shown in the top image. Each stage focused on simplifying the build process while refining the overall look. The result is a clean, practical design that's easy to manufacture and suits a modern home environment.



* Early example of rendering

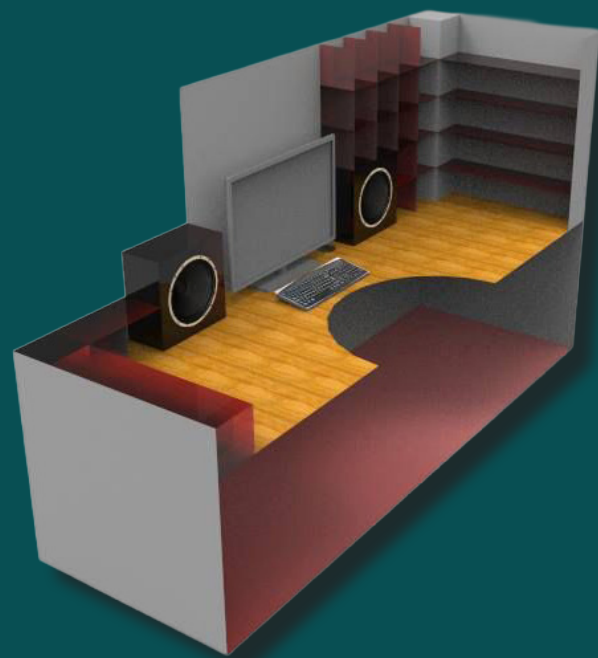
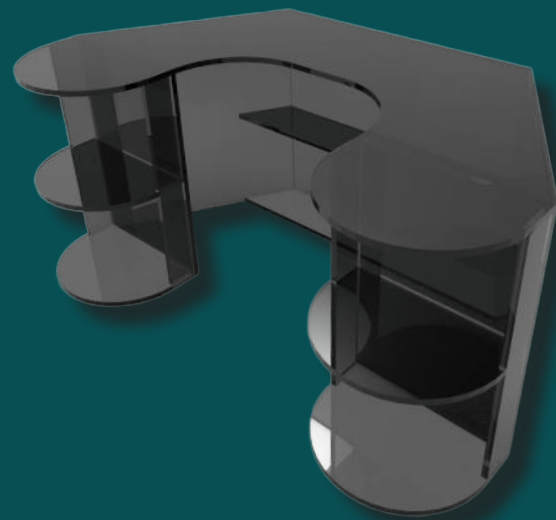
12

Desks

Over the years, I've created a range of desk designs tailored to different specifications and styles. The images shown here represent a small selection of that work.

The top image features one of my personal favorites, a piece called **Desk B**, which was creatively designed around the form and flow of the letter 'B'.

The bottom two images show a custom desk built specifically to fit the unique dimensions beneath a staircase, making the most of an otherwise awkward space.

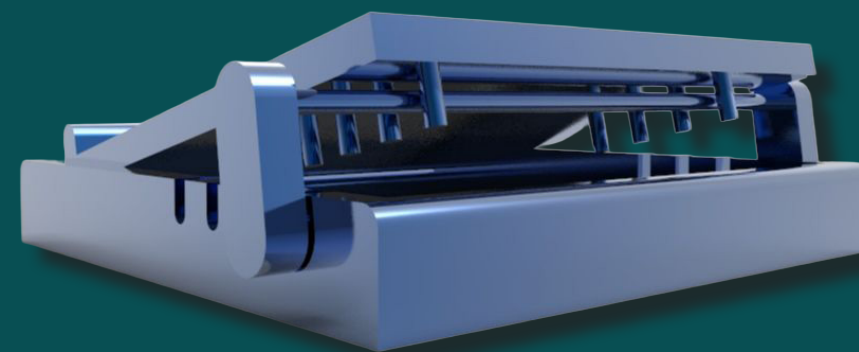
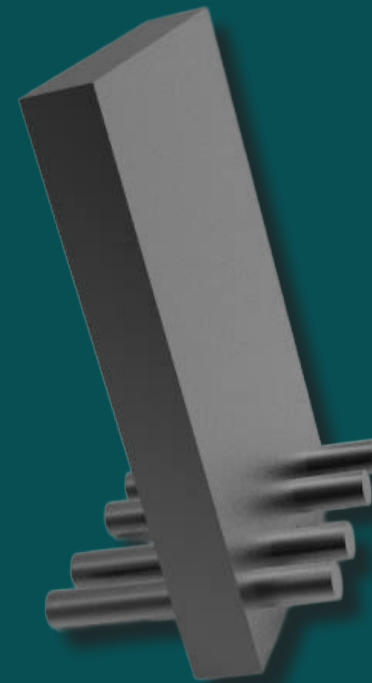


13



Stands

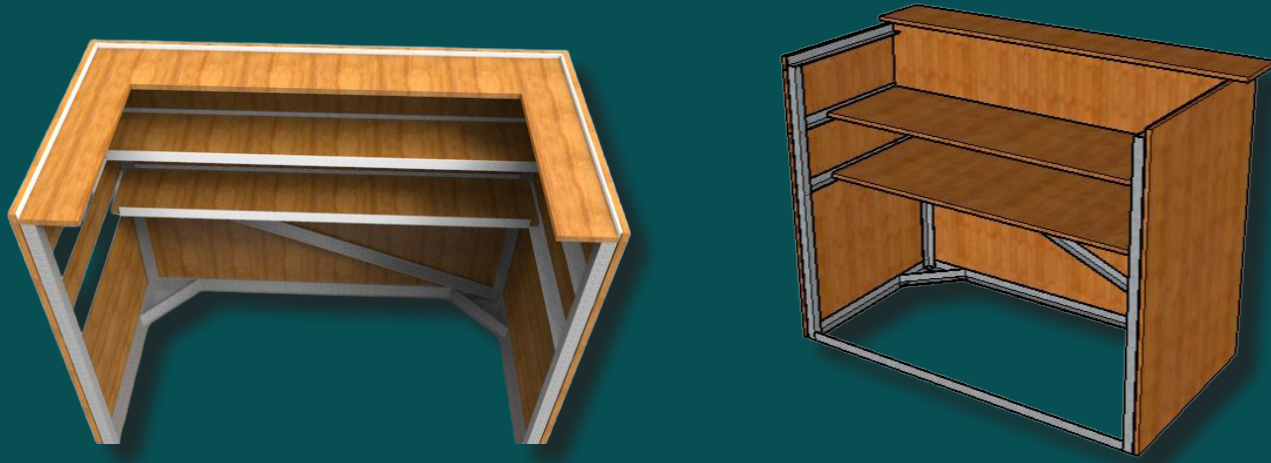
This set of stands was designed to share a cohesive aesthetic, using wooden rods and sheet stock to create a series of simple, elegant forms. Each piece was crafted to complement the others while maintaining a clean and minimal look.



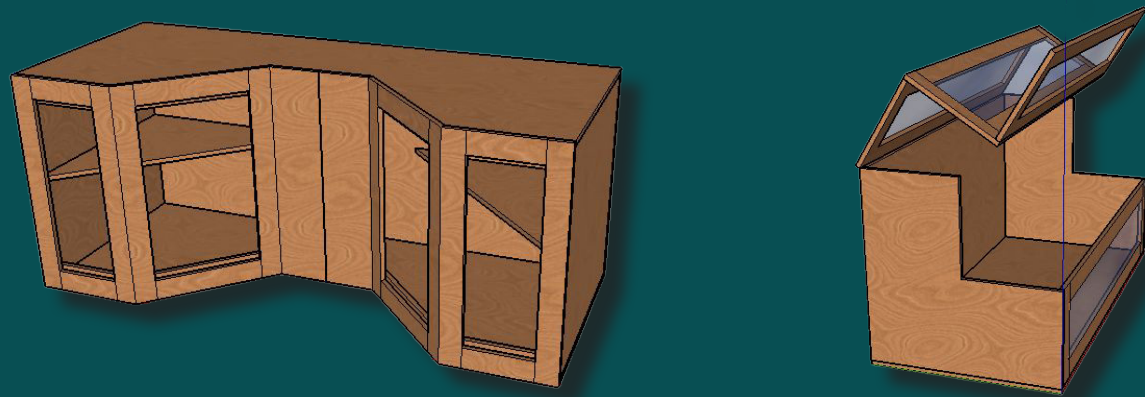
14



Bars and Vivariums



This outdoor bar combines a solid angled steel frame with wooden panels to achieve a straightforward yet durable build.

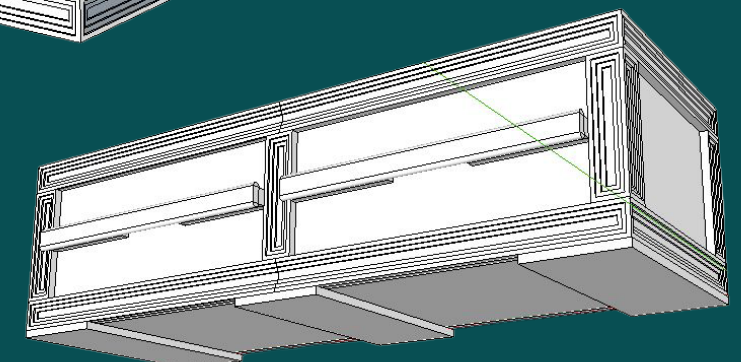
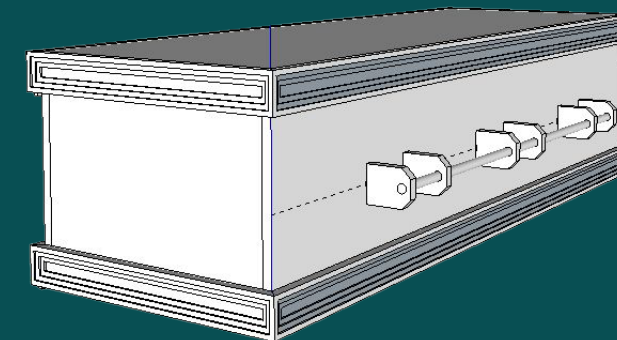
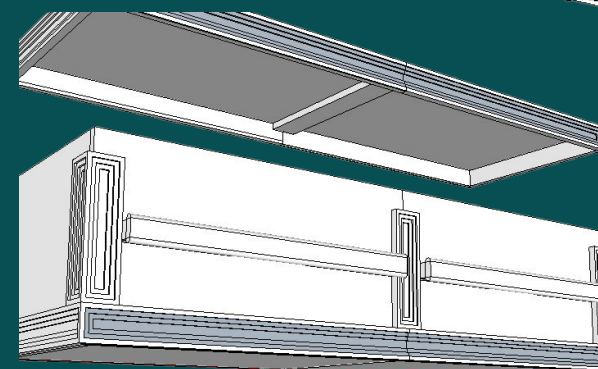
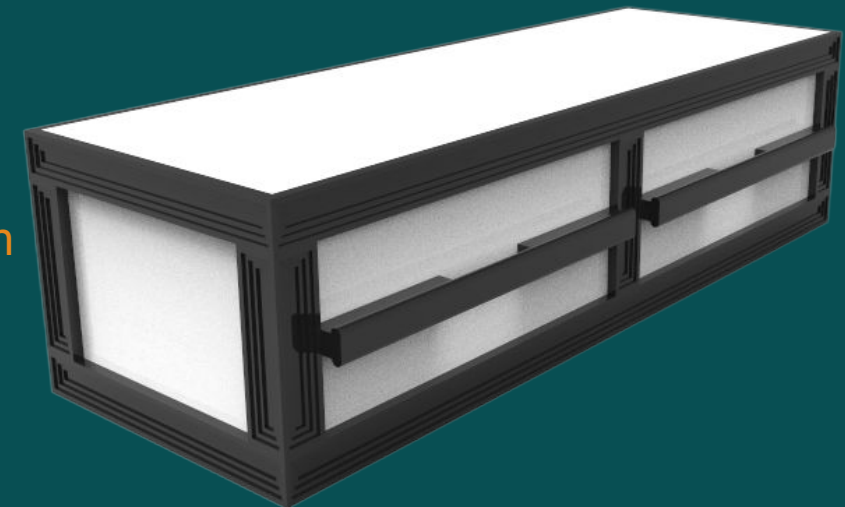


These vivariums were a personal project focused on designing unique enclosures to showcase pets in a stylish and functional way. Each build explored different layouts to create visually distinct habitats that also meet the needs of the animals inside.

15

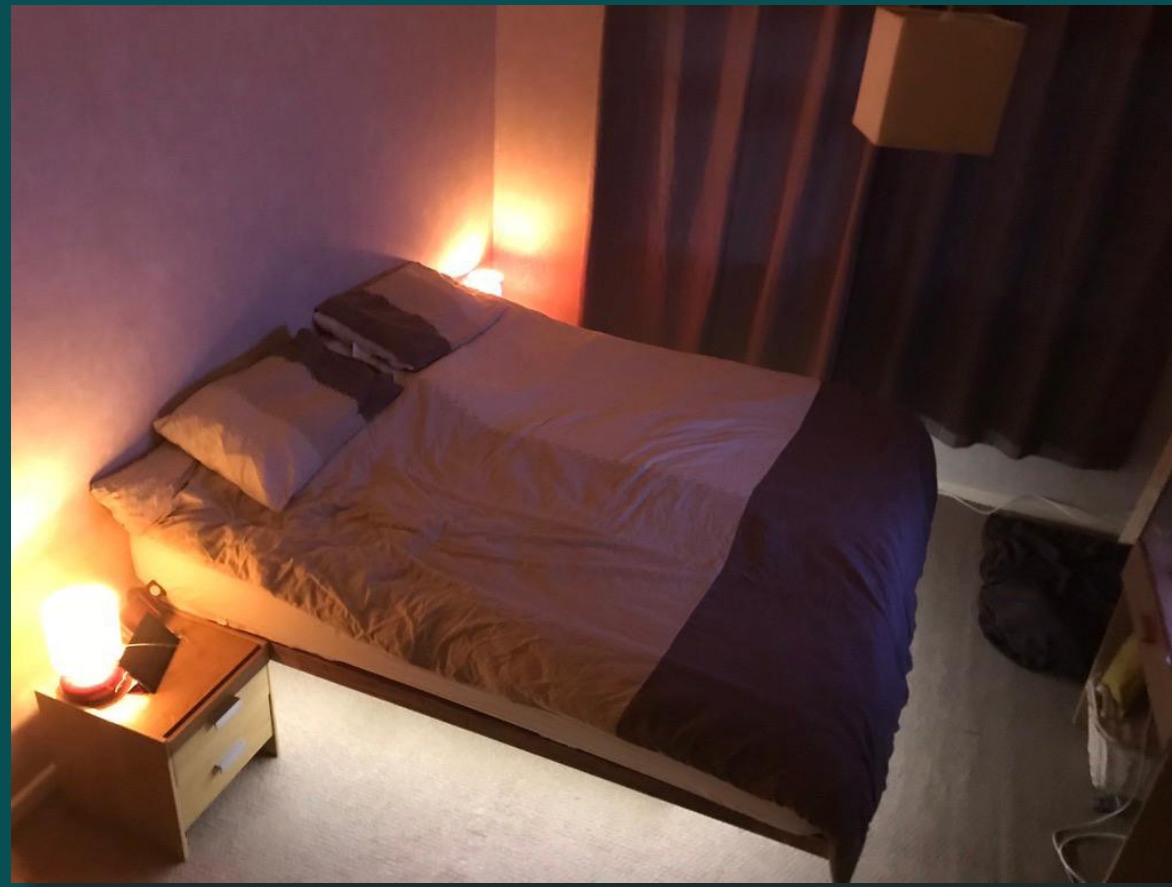
Caskets

This project was an interesting challenge, as it was my first time designing caskets. The goal was to create a visually appealing result using readily available materials, keeping the design both respectful and cost-effective. It was a thoughtful process that balanced aesthetics with practicality.



16

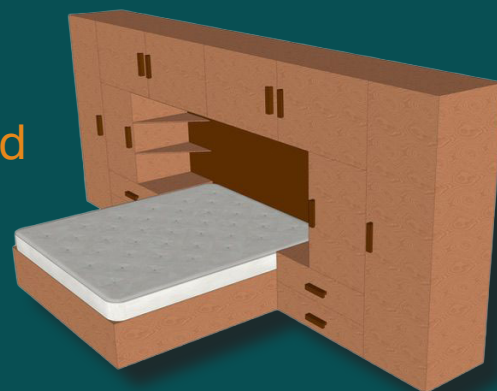
Floating Bed



This bed frame was designed with an offset base to create the visual illusion of a floating structure. Built from CLS structural timber, the entire frame has been treated with a rich dark brown finish for a clean, modern aesthetic. Strength and durability were the key priorities throughout the build. While it hasn't undergone formal weight testing, I'm confident the frame is sturdier than the floor it rests on.

Wardrobe and Bed Design

17



First Bed



This was my first custom bed build, constructed using an internal frame of 2x1 CLS timber for structure and stability. The exterior is finished with softwood panels and wrapped in jute fabric, creating a natural, clean aesthetic. The combination of materials offers a balance between strength, texture, and simplicity.



18

Garden & Kitchen



Garden Design
Rendering

Kitchen Renovation

I used 3d printing to replace knobs, create spice racks and create utensil hangers, the colour scheme was changed from wood to white and grey with gold accents.
*3d printed parts are still strong after 5 years.



19

Other Examples



Modular Storage



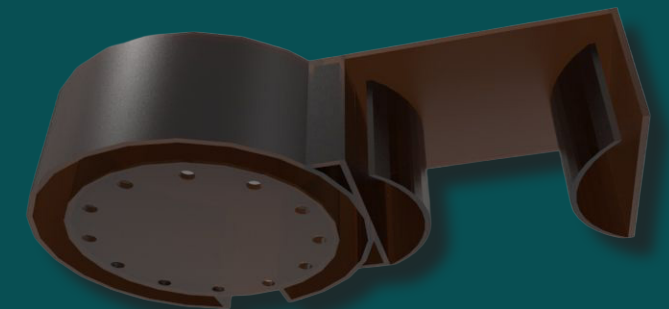
Garden Steps



My First Render
Coffee Table



Fire/Gothic
Inspired Desk



20

Armchair Cup Holder